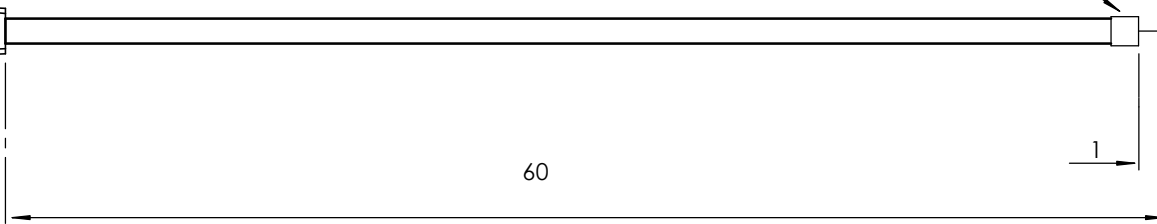
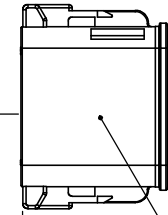


J1



WHITE HEATSHRINK WITH PRINTED PART #

J2



TO VDR SLOT D

60

1

J1		J2		WIRE				
TO COMPUTER		TO AVDR-J1A4-001						
RJ45 ETHERNET		DEUTSCH DT06-12SD-P012		TWISTED PAIRS*	ID	COLOR	AWG	LENGTH (INCH)
PIN #	CODE	PIN #	CODE					
1		12	J	TWISTED PAIR	DB-	ORANGE/ WHITE	20	60
2		11	J	TWISTED PAIR	DB+	ORANGE	20	60
3		10	J	TWISTED PAIR	DA+	GRREN/ WHITE	20	60
4								
5								
6		9	J	TWISTED PAIR	DA-	GREEN	20	60
7								
8								
		W12S-P012		WEDGE LOCK				
		0413-217-1605		PLUG				

PIN CODE	PART #	TOTAL
J	DEUTSCH 0462-201-16141	4
WEDGE LOCK	W12S-P012	1
PLUGS	0413-217-1605	8

*IF APPLICABLE TWISTING SHOULD NOT BE LESS THAN ONE TWIST PER INCH UNLESS OTHERWISE SPECIFIED

						SCALE: NONE		DO NOT SCALE DRAWING		REVISION 1.0	
<p>621 Technologies inc.</p>								<p>TITLE:</p> <p>HARNESS FOR VEHICLE DATA RECORDER</p>			
<p>DRAWN Charles Jacob CJ 04/09/2019</p> <p>CHKD Alexandr belli AB 04/09/2019</p> <p>APPVD Dan Laton DL 04/10/2019</p> <p>MFG</p> <p>Q.A</p>				<p>THIRD ANGLE PROJECTION</p> <p>All data and drawing are sent without acknowledgement of a legal obligation, without guarantee of completeness and without promise of warranty. The data provided were ascertained using extreme care. However, possible sources of error cannot be excluded completely. We therefore do not accept any responsibility for damage and costs that may result from the use of these data. Binding data are to be taken exclusively from our drawings that are subject to confirmation. These contents are confidential and property of 621 inc., so it must not be copied or submitted to third parties for use or examination.</p>				<p>DWG NO.</p> <p>AVDR-J1A4-H2</p>		<p>A3</p>	
<p>Dimensions are approximate. For representation only. Tolerances except where otherwise stated .X = +/- 0.25</p>								<p>DIMENSIONS ARE IN INCHES UNLESS UNTIL SPECIFIED</p>			