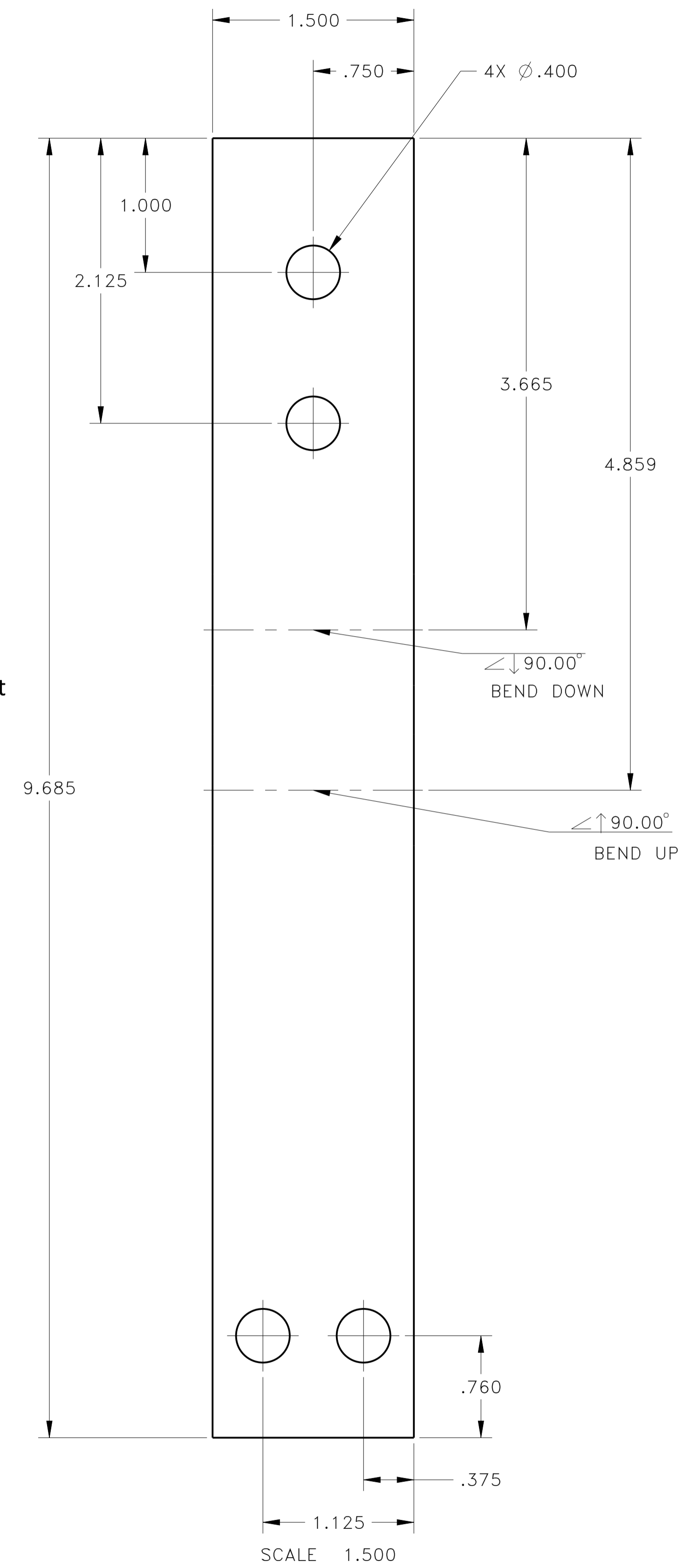
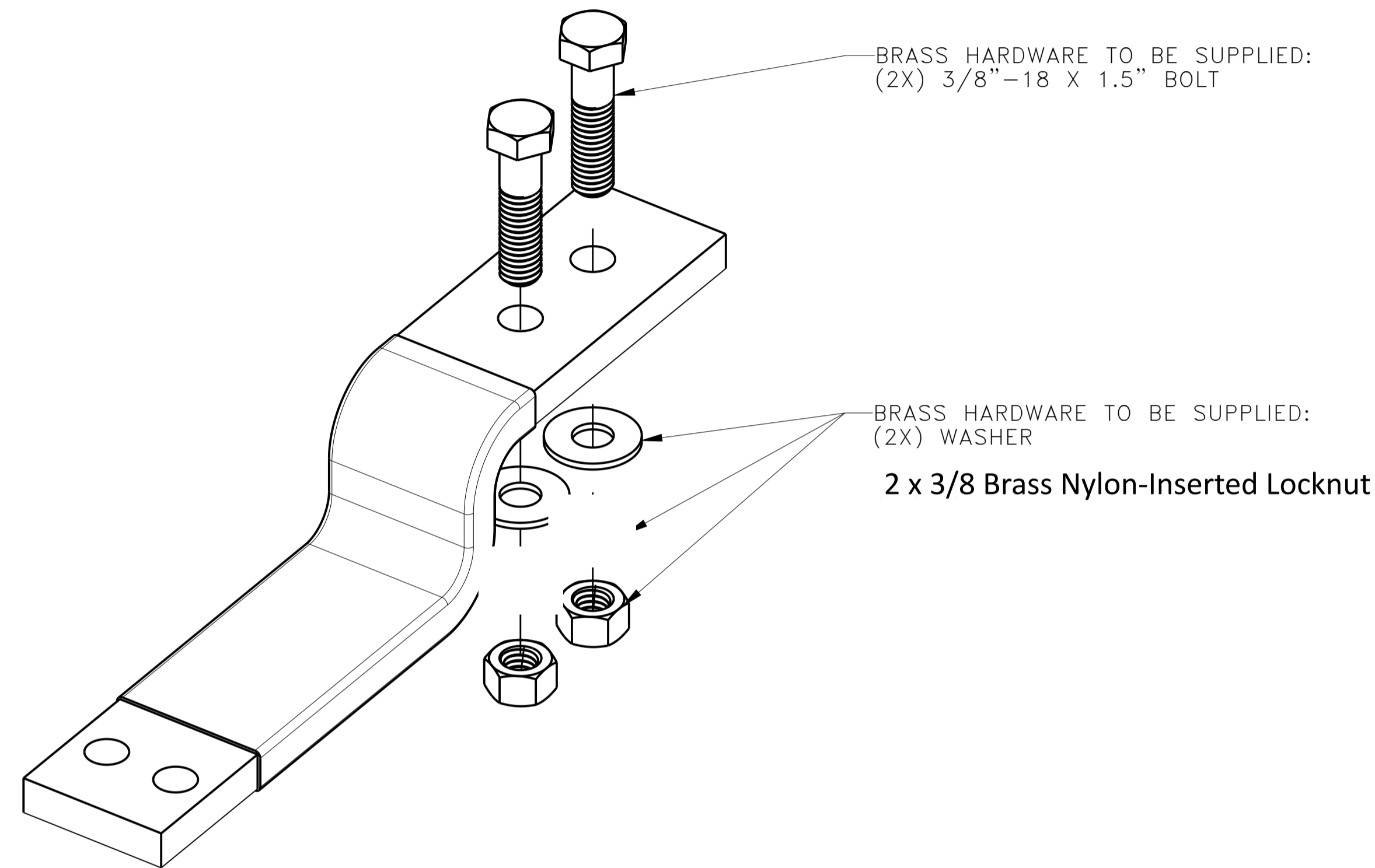
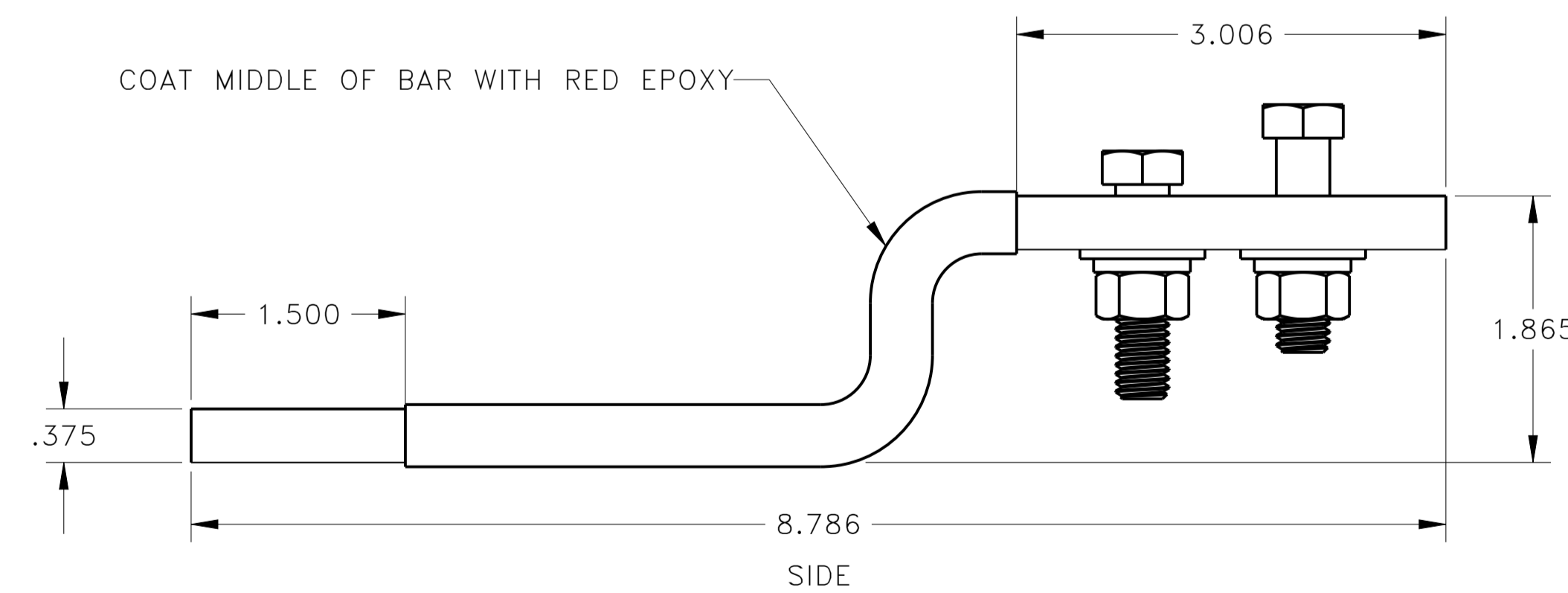
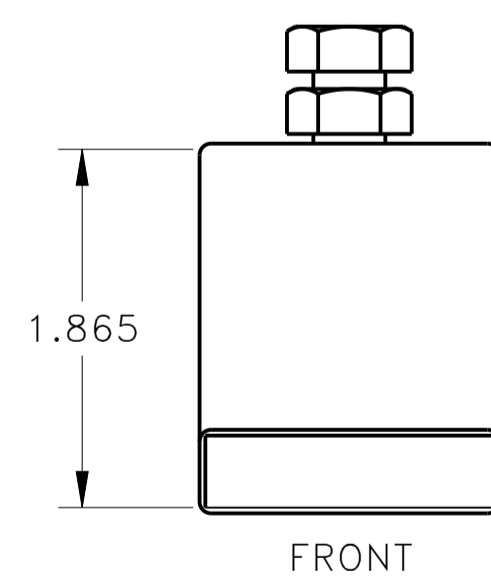
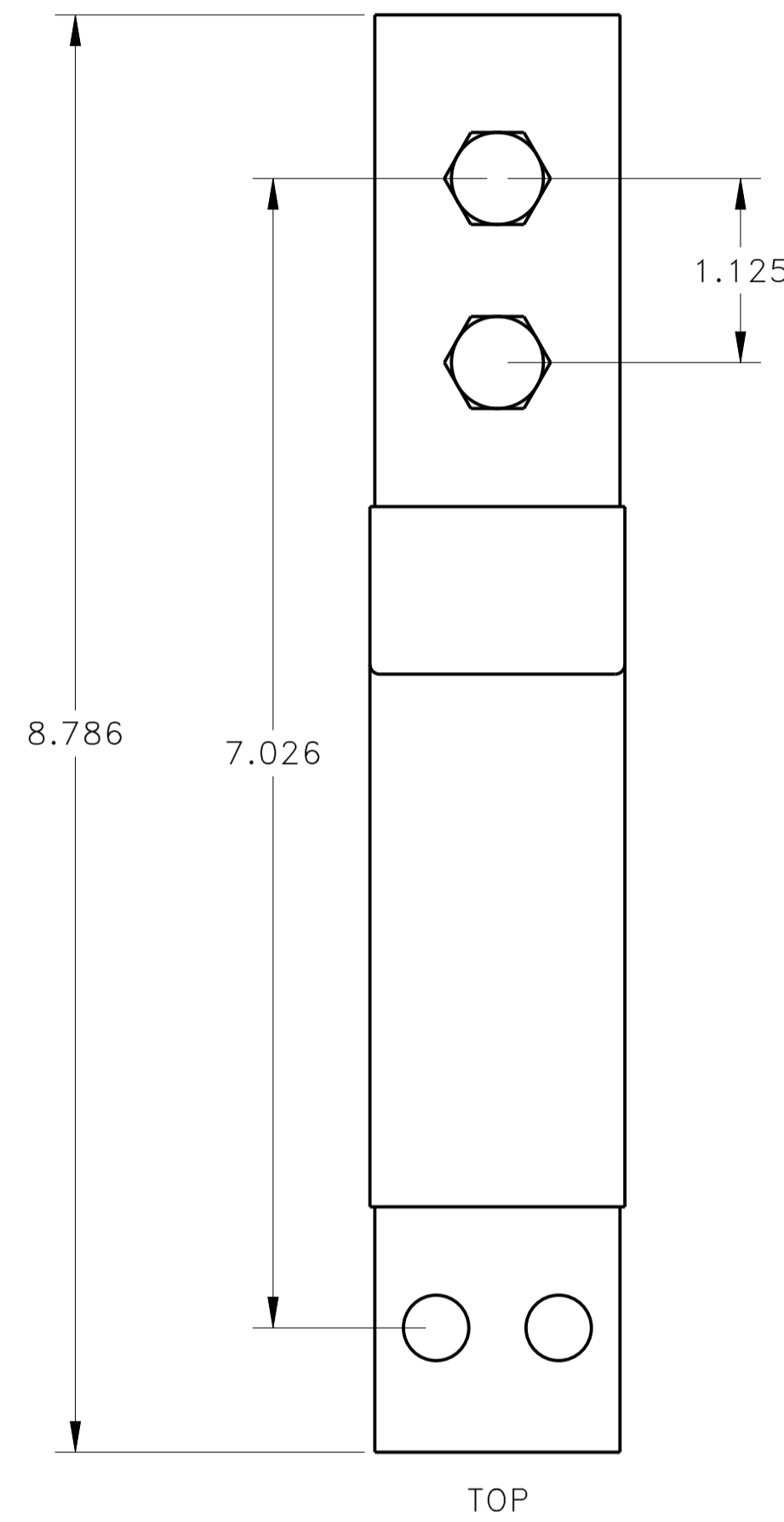


NOTES:

1. APPLICABLE STANDARDS / SPECIFICATIONS:  
A. ASME Y14.5-2009 DIMENSIONING AND TOLERANCING
2. ITEM IDENTIFICATION:  
MARK OR ATTACH A LABEL TO INDICATE PART NUMBER AND REVISION LEVEL OF COMPONENT.
3. TO BE MADE OUT OF TIN PLATED COPPER WITH MIDDLE COVERED WITH RED EPOXY.
4. SUPPLY SHOWN HARDWARE.
5. ALL INSIDE BEND RADII TO BE .375.

REVISION HISTORY				
ZONE	REV	DESCRIPTION	DATE	APPROVED BY
B	B	ECO 37372	2020-APR-22	GCRET



THIS IS A COMPUTER GENERATED DRAWING. DO NOT UPDATE MANUALLY.		E-ONE, INC. PROPRIETARY		INTERPRET DRAWING PER ASME Y14.5-2009 UNLESS OTHERWISE SPECIFIED DIMENSIONS ARE IN INCHES TOLERANCES ANGLES ± .5° DECIMALS ± .01 FRACTIONS ± 1/32 BROKEN EDGES .015 MAX. FILLETS R.015 MAX. PARTS SHALL BE FREE OF BURRS SURFACE ROUGHNESS 125 DO NOT SCALE THIS DRAWING THIRD ANGLE PROJECTION				E-ONE, INC. 1601 S.W. 37TH AVENUE Ocala, Florida 34474	
DISTRIBUTION STATEMENT: THIS DOCUMENT CONTAINS E-ONE PROPRIETARY DATA THAT IS PRIVATE AND PRIVILEGED. THIS DOCUMENT SHALL BE MAINTAINED IN CONFIDENCE AND SHALL NOT BE USED FOR MANUFACTURE, DISCLOSED, OR REPRODUCED IN WHOLE OR IN PART WITHOUT THE EXPRESSED WRITTEN CONSENT OF E-ONE, INC.		DATE: 2019-DEC-03 DRAWN BY: CGLOETZNER ENGINEER: CHECKED BY: GCRET DRAWING APPROVAL: GCRET DESIGN APPROVAL: GCRET SIMILAR TO:		SIZE: D SCALE: 1.000		CAGE CODE: 8P082 UNIT WT:		DRAWING NUMBER: 1106193 SHEET: 1 OF 1	