



REV	DESCRIPTION	DATE	DRAWN BY
A.2	PRELIMINARY	8/22/2019	T CUPPY

JG02 WTRZ BLOCK			
DEUTSCH HDP26-18-8PN			
Pin	Wire	Signal	Target
A	296	WTRZ PWR	PP17.4
B	297	HTR PMP SPLY	PP16.2
C	298	HTR PMP PWR	PP16.2
D	301	CIRC PMP 1	PP26.1
E	304	CIRC PMP 2	PP27.1
F			
G			
H			

JG04 WTRZ BLOCK			
DEUTSCH DT04-08PA-E003			
Pin	Wire	Signal	Target
1	305A	GND WTRZ	SP64-SP
2	306	WTRZ INTLK CTRL	PP69.10
3	162	WTRZ ENABLE	JG11.K
4	161	WTRZ SW	JG11.J
5	311	WTRZ ON/OFF	PP17.1
6	300	CMPT FAN 1	PG82.P
7	303	CMPT FAN 2	PP28.1
8			

JP46 FLOW METER			
DEUTSCH DT04-4P-E005			
Pin	Wire	Signal	Target
1	420	FLOW MTR PNL SIG	PP71.8
2			
3	421	FLOW MTR PNL GND	PP71.7
4	419	FLOW MTR PNL PWR	PP71.9

PP29 PUMP COMPT LT			
DEUTSCH DT06-2S-EP06			
Pin	Wire	Signal	Target
1	410	PUMP COMPT LT	PP69.7
2	400E	GND CMPT LTS	SP59-SP

PP75 RH SCENE LT SW			
DEUTSCH DT06-2S-EP06			
Pin	Wire	Signal	Target
1	415	SCENE LT SW RH	PP70.3
2	404	GND SCENE LT SW	PP84.10

PP86 MPLX INTERRUPT			
DEUTSCH DT06-3S-EP09			
Pin	Wire	Signal	Target
A	049R	MPLX HI	SP79-SP
B	050R	MPLX LO	SP80-SP
C			

JP86 MPLX INTERRUPT			
DEUTSCH DT04-3P-E005			
Pin	Wire	Signal	Target
A	049S	MPLX HI	JG11.D
B	050S	MPLX LO	JG11.E
C			

JG39 PUMP MOD BLOCK			
DEUTSCH HDP24-24-19PN			
Pin	Wire	Signal	Target
1			
2	018	MPLX DSDPLY PWR	PG82.R
3	019	DR SW PWR	SP50-SP
4	020	GND PUMP MOD 2	SP65-SP
5	021	DELUGE RLY	PP69.11
6	022	TANK LVL PWR 1	PG82.Q
7			
8	024	CAN VLV1 PWR	PP33.1
9	025	FOAM CTRL PWR	PG82.U
10			
11			
12			
13			
14			
15			
16	033	DELUGE PMP PWR	SP61-SP
17			
18			
19			

PP48 TANK LEVEL WATER			
DEUTSCH DT06-6S-EP06			
Pin	Wire	Signal	Target
1	370	WATER LVL SIG	PG82.N
2			
3			
4			
5	369	WATER LVL +	PG82.M
6	371	WATER LVL RET	PG82.L

SP77	
Wire	Target
049L	PG82-C
049M	PP81-5
049N	SP79-SP

SP78	
Wire	Target
050L	PG82-D
050M	PP81-6
050N	SP80-SP

PP81 RH FOAM MOD			
DEUTSCH DT06-6S-EP06			
Pin	Wire	Signal	Target
1			
2			
3			
4			
5	049M	MPLX HI	SP77-SP
6	050M	MPLX LO	SP78-SP

SP79	
Wire	Target
049N	SP77-SP
049P	PP78-1
049R	PP86-A

SP80	
Wire	Target
050N	SP78-SP
050P	PP78-2
050R	PP86-B

PP70 RH PUMP MOD			
DEUTSCH DT06-6S-EP06			
Pin	Wire	Signal	Target
1	332	AJAR SW R2	PP62.1
2	333	AJAR SW R3	PP69.1
3	415	SCENE LT SW RH	PP75.1
4			
5			
6			

SP63	
Wire	Target
406A	PP26-2
406B	PP27-2
406C	XP38-1

PP71 RH FOAM MOD			
DEUTSCH DT06-12SA-EP06			
Pin	Wire	Signal	Target
1	418	PUMP PSI RET	PP45.A
2	417	PUMP PSI SIG	PP45.C
3	416	PUMP PSI +	PP45.B
4	372	PUMP PSI +	PG82.F
5	374	PUMP PSI RET	PG82.E
6	373	PUMP INTAKE PSI SIG	PG82.G
7	421	FLOW MTR PNL GND	JP46.3
8	420	FLOW MTR PNL SIG	JP46.1
9	419	FLOW MTR PNL PWR	JP46.4
10	377	FLOW MTR B/T GND	PG82.H
11	376	FLOW MTR B/T SIG	PG82.K
12	375	FLOW MTR B/T PWR	PG82.J

PP78 RH PUMP MOD			
DEUTSCH HDP26-18-6SN			
Pin	Wire	Signal	Target
1	049P	MPLX HI	SP79-SP
2	050P	MPLX LO	SP80-SP
3			
4			
5			
6			

PP69 RH PUMP MOD			
DEUTSCH DT06-12SA-EP06			
Pin	Wire	Signal	Target
1	408A	COMPT LT R2	SP67-SP
2	409A	COMPT LT R3	SP68-SP
3	411	WORK LT 1	PP64.1
4	413	MARKER LT	PP67.1
5	414	MRKR/TRN RH	PP68.1
6	412	WARNING LT	PP61.1
7	410	PUMP COMPT LT	PP29.1
8			
9			
10	306	WTRZ INTLK CTRL	JG04.2
11	021	DELUGE RLY	JG39.5
12	407	FOAM XFR PMP RLY	PP36.1

PP33 BUMPER TURRET			
DEUTSCH DT06-2S-EP06			
Pin	Wire	Signal	Target
1	024	CAN VLV1 PWR	JG39.7
2	401	GND CAN VLV	PP84.7

PP47 FLOW SW R1 REEL			
DEUTSCH DT06-2S-EP06			
Pin	Wire	Signal	Target
1	386	FLOW SW DISCHRG REEL	PG82.O
2	396	GND PUMP MOD	PP84.2

PP35 IGN RELAY CTRL			
DEUTSCH DT06-2S-EP06			
Pin	Wire	Signal	Target
1	048B	IGN SIG CHS	JG11.H
2	020B	GND PUMP MOD 2	SP65-SP

SP65	
Wire	Target
020	JG39-4
020A	PP36-2
020B	PP35-2

SP64	
Wire	Target
305B	PP28-2
305A	JG04-1
305C	PP84-8

SP50	
Wire	Target
019	JG38-3
018C	PP59-3
019D	PP82-3
019A	PG82-S
019B	PG82-T

PG82 PUMP MODULE LH			
DEUTSCH HDP26-24-23SN			
Pin	Wire	Signal	Target
A	049	MPLX HI	JG11.A
B	050	MPLX LO	JG11.B
C	049L	MPLX HI	SP77-SP
D	050L	MPLX LO	SP78-SP
E	374	PUMP PSI RET	PP71.5
F	372	PUMP PSI +	PP71.4
G	373	PUMP INTAKE PSI SIG	PP71.6
H	377	FLOW MTR B/T GND	PP71.10
J	375	FLOW MTR B/T PWR	PP71.12
K	376	FLOW MTR B/T SIG	PP71.11
L	371	WATER LVL RET	PP48.6
M	369	WATER LVL +	PP48.5
N	370	WATER LVL SIG	PP48.1
O	386	FLOW SW DISCHRG REEL	PP47.1
P	300	CMPT FAN 1	JG04.6
Q	022	TANK LVL PWR 1	JG39.6
R	018	MPLX DSDPLY PWR	JG39.2
S	019A	DR SW PWR	SP50-SP
T	019B	DR SW PWR	SP50-SP
U	025	FOAM CTRL PWR	JG39.9
V			
W			
X			

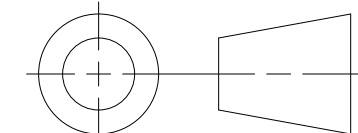
PP36 FOAM XFR RELAY			
AMP 282080-1			
Pin	Wire	Signal	Target
1	407	FOAM XFR PMP RLY	PP69.12
2	020A	GND PUMP MOD 2	SP65-SP

PP84 GNDS RH			
DEUTSCH DT06-12SA-EP06			
Pin	Wire	Signal	Target
1	395D	GND DELUGE PMP	SP62-SP
2	396	GND PUMP MOD	PP47.2
3	397C	GND AJAR SW	SP83-SP
4	398	GND WORK LT	PP64.2
5	399D	GND DOT LTS	SP82-SP
6	400F	GND CMPT LTS	SP59-SP
7	401	GND CAN VLV	PP33.2
8	305C	GND WTRZ	SP64-SP
9	403A	GND WTRZ HTR	SP84-SP
10	404	GND SCENE LT SW	PP75.2
11			
12			


SP84	
Wire	Target
403A	PP84.9
403B	PP17-2

XP38 GND			
GENERIC 3/8 RING TERMINAL			
Pin	Wire	Signal	Target
1	406C	GND CIRC PMP	SP63-SP

DO NOT SCALE DRAWING  
DIMENSIONS ARE IN INCHES  
UNLESS OTHERWISE SPECIFIED.



THIRD ANGLE PROJECTION



EMERGENCY ONE INC  
OCAJA FL USA

HARN P8AT  
PUMP MODULE RH

DATE OF RELEASE  
DRAWN BY T CUPPY DATE 8/13/2019  
CHECKER D SMITH  
DESIGN APPROVAL P WOOTEN  
SIMILAR TO:

SIZE 1098001  
SCALE NONE SHEET 2 OF 3

APPLICABLE STANDARDS / SPECIFICATIONS  
HARNES SPECIFICATIO DRAWING 606000

REV	DESCRIPTION	DATE	DRAWN BY
A.2	PRELIMINARY	8/22/2019	T CUPPY

A

A

B

B

C

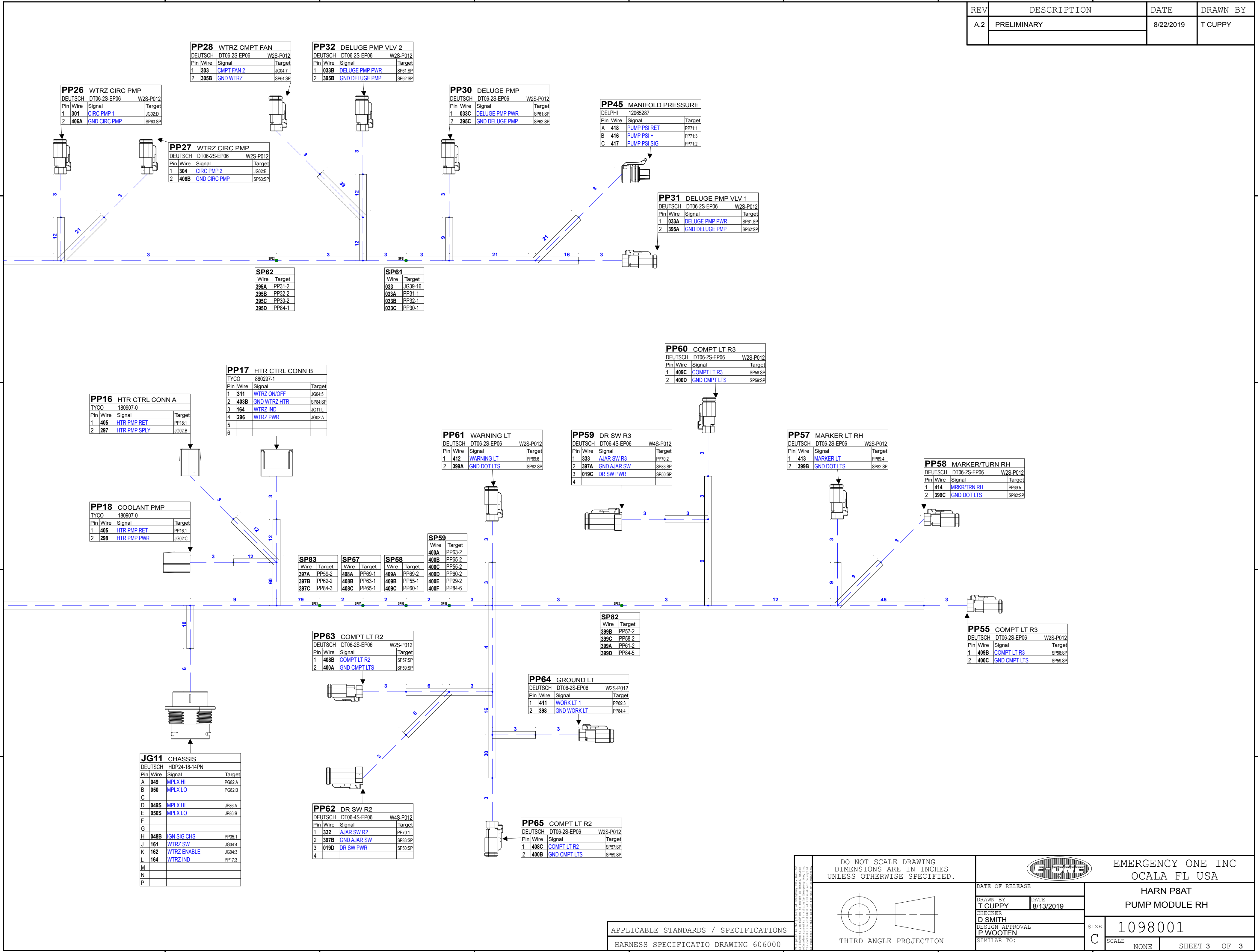
C

D

D

E

E



APPLICABLE STANDARDS / SPECIFICATIONS  
HARNES SPECIFICATIO DRAWING 606000

DO NOT SCALE DRAWING DIMENSIONS ARE IN INCHES UNLESS OTHERWISE SPECIFIED.		EMERGENCY ONE INC OCALA FL USA	
DATE OF RELEASE		HARN P8AT	
DRAWN BY T CUPPY	DATE 8/13/2019	PUMP MODULE RH	
CHECKER D SMITH	DESIGN APPROVAL P WOOTEN	SIZE C	1098001
SIMILAR TO:		SCALE NONE	SHEET 3 OF 3

