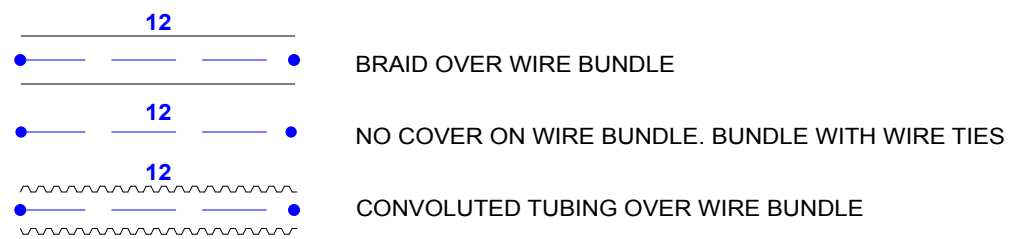


REV	DESCRIPTION	DATE	DRAWN BY
A.1	PRELIMINARY	8/16/2019	D SMITH

NOTES:

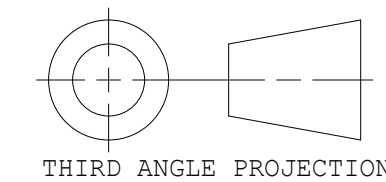
1. PLUG ALL UNUSED CAVITIES IN ALL SEALED CONNECTORS.
2. GRAPHIC SYMBOLS FOR WIRE BUNDLE.



3. MPLX HI AND MPLX LO SHALL BE YELLOW/GREEN TWISTED PAIR, 18 AWG, GXL, NO JACKET REQUIRED. TWIST LAY LENGTH TO BE NOMINAL ONE TWIST PER INCH.

WIRE LIST				FROM				TO				REF ONLY	
WIRE	SIGNAL	COLOR	AWG	CONN	CAV	TERMINAL	SEAL	CONN	CAV	TERMINAL	SEAL	LGTH	WIRE
457	BEACON	RED	AWG 16	PB24	36	0462-201-16141		PB30	1	1062-16-0122		169.50	457
458	SCENE LT RH	RED	AWG 16	PB24	40	0462-201-16141		PB29	1	1062-16-0122		206.50	458
459	SCENE LT RR	GREY	AWG 16	PB37	1	1062-16-0122		PB24	8	0462-201-16141		102.50	459
463	GND BEACON	BLACK	AWG 16	PB30	2	1062-16-0122		PB53	5	1062-16-0122		163.00	463
464	GND SCENE RR	BLACK	AWG 16	PB37	2	1062-16-0122		PB53	8	1062-16-0122		96.00	464
465	GND SCENE RT	BLACK	AWG 16	PB53	1	1062-16-0122		PB29	2	1062-16-0122		200.00	465
467	WARN LT RH SIDE	ORANGE	AWG 16	PB56	1	1062-16-0122		PB24	38	0462-201-16141		117.50	467
468	WARN LT RH RR	RED	AWG 16	PB24	37	0462-201-16141		PB43	1	1062-16-0122		73.50	468
470	BRAKE/TURN LT UP	RED	AWG 16	PB59	A	1062-16-0122		PB24	31	0462-201-16141		62.50	470
471	BRAKE/TURN LT DN	ORANGE	AWG 16	PB58	A	1062-16-0122		PB24	32	0462-201-16141		62.50	471
472	BRAKE LT CENTER	YELLOW	AWG 18	PB35	1	1062-16-0122		PB24	33	0462-201-16141		120.50	472
473	BACKUP LT	WHITE	AWG 16	PB44	1	1062-16-0122		PB24	34	0462-201-16141		62.50	473
478	ENG STRT DISABLE	GREEN	AWG 18	PB24	15	0462-201-16141		PB52	1	1062-16-0122		188.50	478
479	AJAR ENG COMPT	BLUE	AWG 18	PB24	25	0462-201-16141		PB51	1	1062-16-0122		109.50	479
480	AJAR SW R4	WHITE	AWG 18	PB25	4	1062-16-0122		PB24	14	0462-201-16141		258.50	480
481	AJAR RR LADDER	YELLOW	AWG 18	PB40	1	1062-16-0122		PB24	24	0462-201-16141		67.50	481
482	AT MOD PSI SW	YELLOW	AWG 18	PB24	3	0462-201-16141		PB38	1	1062-16-0122		300.50	482
483	PSI SW SPLY	PINK	AWG 18	PB24	4	0462-201-16141		PB38	2	1062-16-0122		300.50	483
452B	MPLX HI	YELLOW	AWG 20	SP114	SP			PG40	A	1062-16-0644		89.00	452B
452D	MPLX HI	YELLOW	AWG 20	PB55	1	0462-201-1631		SP114	SP			30.00	452D
452E	MPLX HI	YELLOW	AWG 20	SP114	SP			JG27	1	1060-16-0644		203.00	452E
453B	MPLX LO	GREEN	AWG 20	SP115	SP			PG40	B	1062-16-0644		91.00	453B
453D	MPLX LO	GREEN	AWG 20	PB55	2	0462-201-1631		SP115	SP			28.00	453D
453E	MPLX LO	GREEN	AWG 20	SP115	SP			JG27	2	1060-16-0644		205.00	453E
454A	ENG COMPT LT	ORANGE	AWG 16	PB24	5	0462-201-16141		SP101	SP			122.50	454A
454B	ENG COMPT LT	ORANGE	AWG 16	SP101	SP			PB46	1	1062-16-0122		50.00	454B
454C	ENG COMPT LT	ORANGE	AWG 16	SP101	SP			PB47	1	1062-16-0122		24.00	454C
454D	ENG COMPT LT	ORANGE	AWG 16	SP101	SP			PB48	1	1062-16-0122		22.00	454D
455A	COMPT LT R4	WHITE	AWG 14	SP102	SP			PB24	39	0462-209-16141		79.50	455A
455B	COMPT LT R4	WHITE	AWG 14	SP102	SP			PB26	1	1062-14-0122		160.00	455B
455C	COMPT LT R4	WHITE	AWG 14	SP102	SP			PB28	1	1062-14-0122		131.00	455C
456A	DECK LT	VIOLET	AWG 16	PB24	10	0462-201-16141		SP104	SP			147.50	456A
456B	DECK LT	VIOLET	AWG 16	SP104	SP			PB57	1	1062-16-0122		37.00	456B
456C	DECK LT	VIOLET	AWG 16	SP104	SP			PB31	1	1062-16-0122		37.00	456C
460A	GND ENG COMP LT	BLACK	AWG 16	PB53	2	1062-16-0122		SP108	SP			118.00	460A
460B	GND ENG COMP LT	BLACK	AWG 16	PB46	2	1062-16-0122		SP108	SP			48.00	460B
460C	GND ENG COMP LT	BLACK	AWG 16	PB47	2	1062-16-0122		SP108	SP			22.00	460C
460D	GND ENG COMP LT	BLACK	AWG 16	PB48	2	1062-16-0122		SP108	SP			24.00	460D
461A	GND COMP LT	BLACK	AWG 14	PB53	3	1062-14-0122		SP107	SP			161.00	461A
461B	GND COMP LT	BLACK	AWG 14	SP107	SP			PB26	2	1062-14-0122		72.00	461B
461C	GND COMP LT	BLACK	AWG 14	SP107	SP			PB28	2	1062-14-0122		43.00	461C
462A	GND DECK LT	BLACK	AWG 16	PB53	6	1062-16-0122		SP109	SP			139.00	462A
462B	GND DECK LT	BLACK	AWG 16	SP109	SP			PB31	2	1062-16-0122		39.00	462B
462C	GND DECK LT	BLACK	AWG 16	SP109	SP			PB57	2	1062-16-0122		39.00	462C
466A	STEP LT RH	VIOLET	AWG 16	PB24	9	0462-201-16141		SP105	SP			45.50	466A
466B	STEP LT RH	VIOLET	AWG 16	SP105	SP			JB39	1	1062-16-0122		22.00	466B
466C	STEP LT RH	VIOLET	AWG 16	SP105	SP			JB38	1	1062-16-0122		53.00	466C
466D	STEP LT RH	VIOLET	AWG 16	SP105	SP			PB45	1	1062-16-0122		56.00	466D
469A	MARKER LT	BROWN	AWG 16	PB24	1	0462-201-16141		SP103	SP			85.50	469A
469B	MARKER LT	BROWN	AWG 16	SP103	SP			PB42	1	1062-16-0122		41.00	469B
469C	MARKER LT	BROWN	AWG 16	SP103	SP			PB32	1	1062-16-0122		133.00	469C
469D	MARKER LT	BROWN	AWG 16	SP103	SP			PB34	1	1062-16-0122		32.00	469D
469E	MARKER LT	BROWN	AWG 16	SP103	SP			PB36	1	1062-16-0122		46.00	469E
469F	MARKER LT	BROWN	AWG 16	SP103	SP			PB33	1	1062-16-0122		38.00	469F
469G	MARKER LT	BROWN	AWG 16	SP103	SP			PB59	C	1062-16-0122		73.00	469G
469H	MARKER LT	BROWN	AWG 16	SP103	SP			PB58	C	1062-16-0122		73.00	469H
474A	GND STEP	BLACK	AWG 16	SP111	SP			PB53	7	1062-16-0122		71.00	474A
474B	GND STEP	BLACK	AWG 16	SP111	SP			JB39	2	1062-16-0122		44.00	474B
474C	GND STEP	BLACK	AWG 16	JB38	2	1062-16-0122		SP111	SP			21.00	474C
474D	GND STEP	BLACK	AWG 16	SP111	SP			PB42	2	1062-16-0122		43.00	474D
475A	GND WARN RT	BLACK	AWG 16	PB53	4	1062-16-0122		SP110	SP			30.00	475A
475B	GND WARN RT	BLACK	AWG 16	SP110	SP			PB45	2	1062-16-0122		41.00	475B
475C	GND WARN RT	BLACK	AWG 16	SP110	SP			PB56	2	1062-16-0122		81.00	475C
475D	GND WARN RT	BLACK	AWG 16	SP110	SP			PB43	2	1062-16-0122		43.00	475D
475E	GND WARN RT	BLACK	AWG 16	SP110	SP			PB32	2	1062-16-0122		78.00	475E
476A	GND MRKR LT CTR	BLACK	AWG 16	SP113	SP			PB53	11	1062-16-0122		98.00	476A
476B	GND MRKR LT CTR	BLACK	AWG 16	PB34	2	1062-16-0122		SP113	SP			19.00	476B
476C	GND MRKR LT CTR	BLACK	AWG 16	PB36	2	1062-16-0122		SP113	SP			27.00	476C
476D	GND MRKR LT CTR	BLACK	AWG 16	PB33	2	1062-16-0122		SP113	SP			19.00	476D
476E	GND MRKR LT CTR	BLACK	AWG 18	PB35	2	1062-16-0122		SP113	SP			16.00	476E
477A	GND TAILLIGHTS	BLACK	AWG 14	SP112	SP			PB53	10	1062-14-0122		46.00	477A
477B	GND TAILLIGHTS	BLACK	AWG 16	PB59	B	1062-16-0122		SP112	SP			10.00	477B
477C	GND TAILLIGHTS	BLACK	AWG 16	SP112	SP			PB58	B	1062-16-0122		10.00	477C
477D	GND TAILLIGHTS	BLACK	AWG 16	PB44	2	1062-16-0122		SP112	SP			10.00	477D
484A	GND AJAR SW	BLACK	AWG 18	SP106	SP			PB53	9	1062-16-0122		69.00	484A
484B	GND AJAR SW	BLACK	AWG 18	SP106	SP			PB52	2	1062-16-0122		113.00	484B
484C	GND AJAR SW	BLACK	AWG 18	PB51	2	1062-16-0122		SP106	SP			34.00	484C
484D	GND AJAR SW	BLACK	AWG 18	SP106	SP			PB25	2	1062-16-0122		183.00	484D
484E	GND AJAR SW	BLACK	AWG 18	SP106	SP			PB40	2	1062-16-0122		42.00	484E

APPLICABLE STANDARDS / SPECIFICATIONS
HARNES SPECIFICATIO DRAWING 606000



THIRD ANGLE PROJECTION

DATE OF RELEASE	
DRAWN BY D SMITH	DATE 8/16/2019
CHECKER T CUPPY	DESIGN APPROVAL P WOOTEN
SIMILAR TO:	

SIZE
C

SCALE
NONE

SHEET 1 OF 3

DO NOT SCALE DRAWING
DIMENSIONS ARE IN INCHES
UNLESS OTHERWISE SPECIFIED.

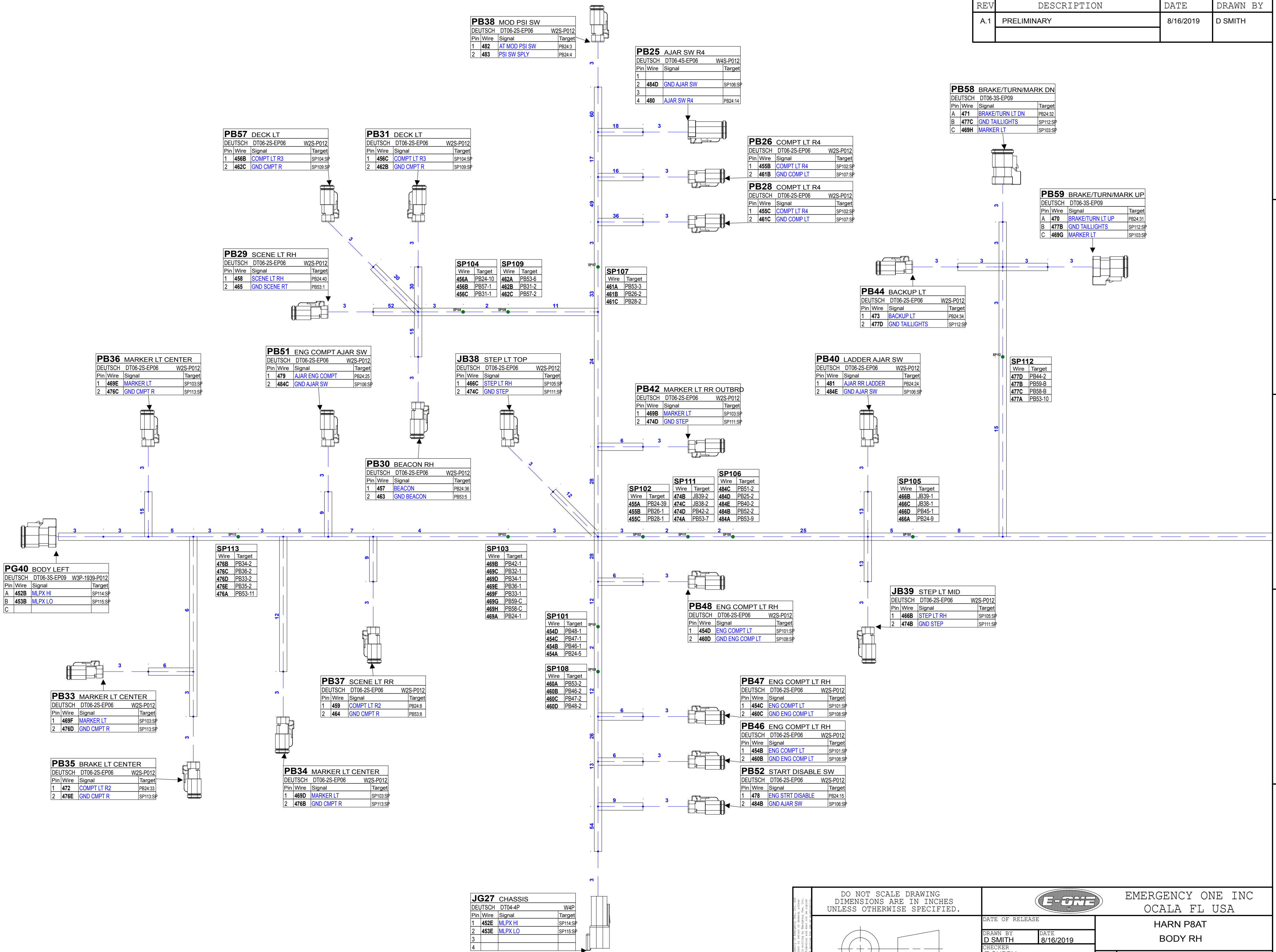


EMERGENCY ONE INC
OCALA FL USA

HARN P8AT
BODY RH

1097219

REV	DESCRIPTION	DATE	DRAWN BY
A.1	PRELIMINARY	8/16/2019	D SMITH



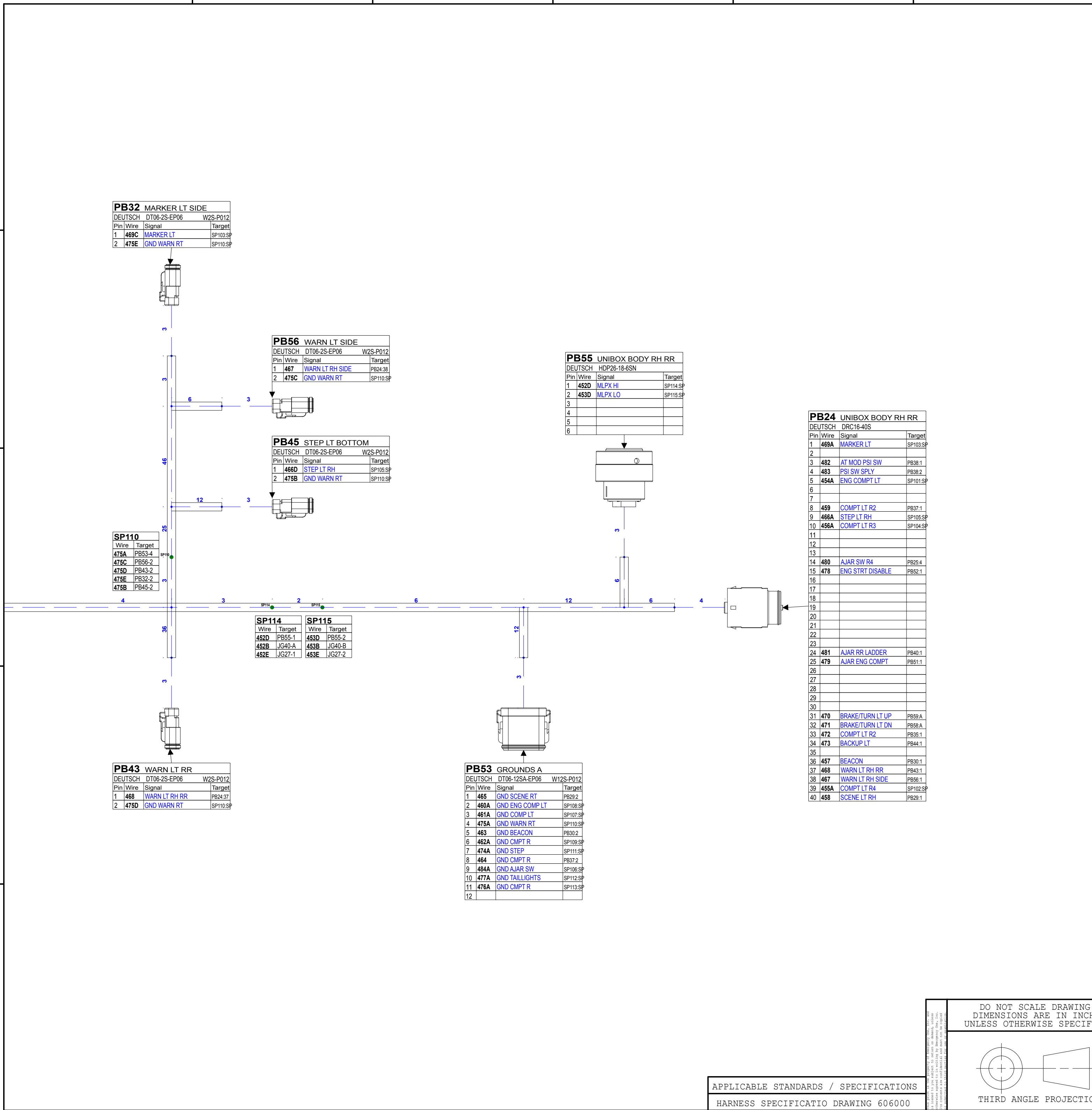
APPLICABLE STANDARDS / SPECIFICATIONS
 HARNESS SPECIFICATIO DRAWING 606000

DO NOT SCALE DRAWING
 DIMENSIONS ARE IN INCHES
 UNLESS OTHERWISE SPECIFIED.

THIRD ANGLE PROJECTION

		EMERGENCY ONE INC OCALA FL USA	
		HARN P8AT BODY RH	
DATE OF RELEASE	DRAWN BY D SMITH	DATE 8/16/2019	SIZE 1097219 SCALE NONE SHEET 2 OF 3
CHECKER T CUPPY		DESIGN APPROVAL P WOOTEN	

REV	DESCRIPTION	DATE	DRAWN BY
A.1	PRELIMINARY	8/16/2019	D SMITH



APPLICABLE STANDARDS / SPECIFICATIONS
HARNES SPECIFICATIO DRAWING 606000

DO NOT SCALE DRAWING
DIMENSIONS ARE IN INCHES
UNLESS OTHERWISE SPECIFIED.

THIRD ANGLE PROJECTION

EMERGENCY ONE INC
OCALA FL USA

HARN P8AT
BODY RH

DATE OF RELEASE
DRAWN BY: D SMITH, DATE: 8/16/2019
CHECKER: T CUPPY
DESIGN APPROVAL: P WOOTEN
SIMILAR TO:

SIZE: C
SCALE: NONE
SHEET 3 OF 3