

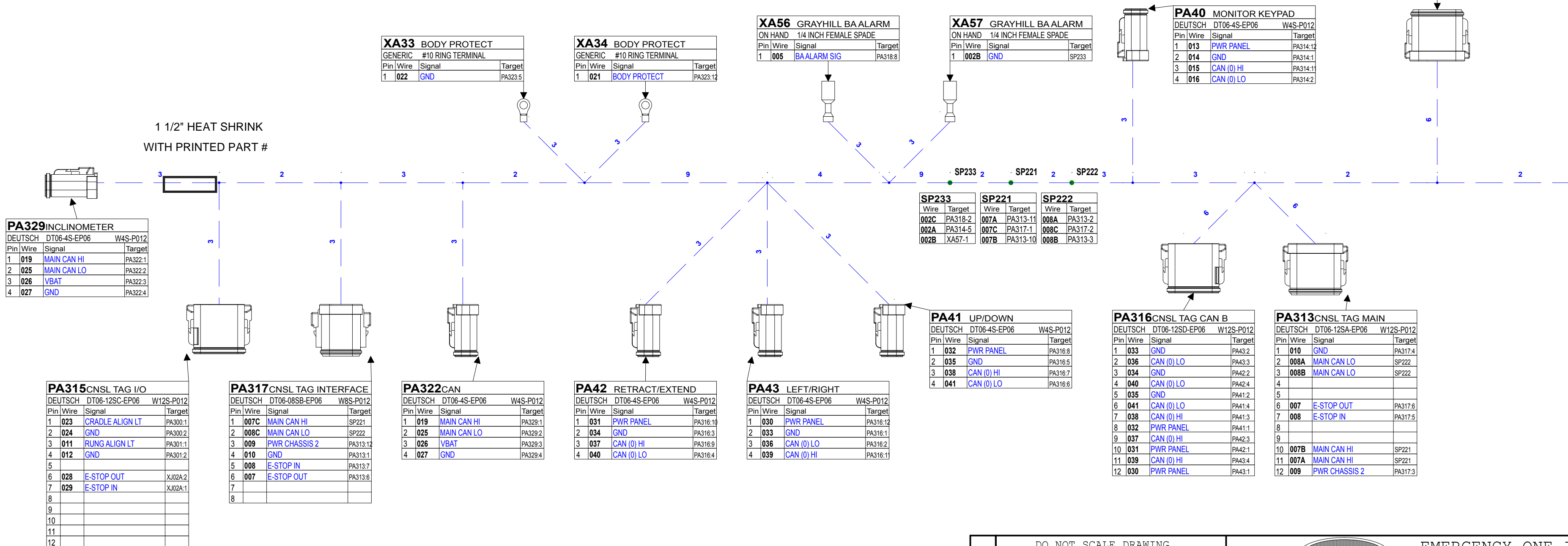
| | | | |
|-----|-----------------|------------|----------|
| REV | DESCRIPTION | DATE | DRAWN BY |
| A | INITIAL RELEASE | 03/13/2019 | T CUPPY |

NOTES:

1. PLUG ALL UNUSED CAVITIES IN ALL CONNECTORS.
2. GRAPHIC SYMBOLS FOR WIRE BUNDLE.
 BRAID OVER WIRE BUNDLE
 NO COVER ON WIRE BUNDLE WITH WIRE TIES
 CONVULUTED TUBING OVER WIRE BUNDLE
3. APPLY HEATSHRINK TO ALL RING TERMINAL CRIMPS. COVER EXPOSED COPPER AND EXTEND OVER WIRE A MIN. 0.5 INCH.
4. CAN (0) HI, CAN (0) LO, CAN (1) HI, CAN (1) LO, MAIN CAN HI, MAIN CAN LO, AUX CAN HI, AND AUX CAN LO SHALL BE YELLOW/GREEN TWISTED PAIR, 18 AWG, GXL, NO JACKET REQUIRED. TWIST LAY LENGTH TO BE NOMINAL ONE TWIST PER INCH.

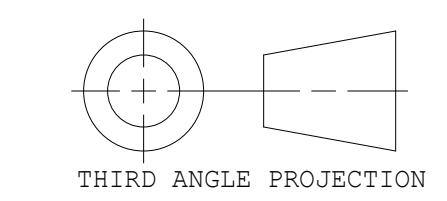
| WIRE | SIGNAL | COLOR | AWG | FROM | | | | TO | | | | REF ONLY | LGTH | WIRE |
|------|-----------------|--------|--------|-------|-----|--------------|------|-------|-----|--------------|------|----------|------|------|
| | | | | CONN | CAV | TERMINAL | SEAL | CONN | CAV | TERMINAL | SEAL | | | |
| 003 | CAN (1) HI | YELLOW | AWG 18 | PA314 | 7 | 1062-16-0644 | | PA318 | 11 | 1062-16-0644 | | 16.00 | 003 | |
| 004 | CAN (1) LO | GREEN | AWG 18 | PA314 | 6 | 1062-16-0644 | | PA318 | 12 | 1062-16-0644 | | 16.00 | 004 | |
| 005 | BAALARM SIG | BROWN | AWG 18 | XA56 | 1 | | | PA318 | 8 | 1062-16-0122 | | 31.00 | 005 | |
| 007 | E-STOP OUT | BLUE | AWG 18 | PA313 | 6 | 1062-16-0122 | | PA317 | 6 | 1062-16-0122 | | 48.00 | 007 | |
| 008 | E-STOP IN | BLUE | AWG 18 | PA313 | 7 | 1062-16-0122 | | PA317 | 5 | 1062-16-0122 | | 48.00 | 008 | |
| 009 | PWR CHASSIS 2 | RED | AWG 18 | PA317 | 3 | 1062-16-0122 | | PA313 | 12 | 1062-16-0122 | | 48.00 | 009 | |
| 010 | GND | BLACK | AWG 18 | PA317 | 4 | 1062-16-0122 | | PA313 | 1 | 1062-16-0122 | | 48.00 | 010 | |
| 011 | RUNG ALIGN LT | ORANGE | AWG 18 | PA301 | 1 | 1062-16-0122 | | PA315 | 3 | 1062-16-0122 | | 52.00 | 011 | |
| 012 | GND | BLACK | AWG 18 | PA315 | 4 | 1062-16-0122 | | PA301 | 2 | 1062-16-0122 | | 52.00 | 012 | |
| 013 | PWR PANEL | ORANGE | AWG 18 | PA40 | 1 | 1062-16-0122 | | PA314 | 12 | 1062-16-0122 | | 18.00 | 013 | |
| 014 | GND | BLACK | AWG 18 | PA314 | 1 | 1062-16-0122 | | PA40 | 2 | 1062-16-0122 | | 18.00 | 014 | |
| 015 | CAN (0) HI | YELLOW | AWG 18 | PA314 | 11 | 1062-16-0644 | | PA40 | 3 | 1062-16-0644 | | 18.00 | 015 | |
| 016 | CAN (0) LO | GREEN | AWG 18 | PA314 | 2 | 1062-16-0644 | | PA40 | 4 | 1062-16-0644 | | 18.00 | 016 | |
| 017 | PWR PANEL | ORANGE | AWG 18 | PA36 | 1 | 1062-16-0122 | | PA314 | 10 | 1062-16-0122 | | 20.00 | 017 | |
| 018 | GND | BLACK | AWG 18 | PA314 | 3 | 1062-16-0122 | | PA36 | 2 | 1062-16-0122 | | 20.00 | 018 | |
| 019 | MAIN CAN HI | YELLOW | AWG 18 | PA329 | 1 | 1062-16-0644 | | PA322 | 1 | 1062-16-0644 | | 13.33 | 019 | |
| 020 | CAN (0) LO | GREEN | AWG 18 | PA314 | 4 | 1062-16-0644 | | PA36 | 4 | 1062-16-0644 | | 20.00 | 020 | |
| 021 | BODY PROTECT | YELLOW | AWG 18 | PA323 | 12 | 1062-16-0122 | | XA34 | 1 | | | 46.50 | 021 | |
| 022 | GND | BLACK | AWG 18 | XA33 | 1 | | | PA323 | 5 | 1062-16-0122 | | 46.50 | 022 | |
| 023 | CRADLE ALIGN LT | GREEN | AWG 18 | PA315 | 1 | 1062-16-0122 | | PA300 | 1 | 1062-16-0122 | | 52.00 | 023 | |
| 024 | GND | BLACK | AWG 18 | PA315 | 2 | 1062-16-0122 | | PA300 | 2 | 1062-16-0122 | | 52.00 | 024 | |
| 025 | MAIN CAN LO | GREEN | AWG 18 | PA322 | 2 | 1062-16-0644 | | PA329 | 2 | 1062-16-0644 | | 13.33 | 025 | |
| 026 | VBAT | ORANGE | AWG 18 | PA329 | 3 | 1062-16-0122 | | PA322 | 3 | 1062-16-0122 | | 13.33 | 026 | |
| 027 | GND | BLACK | AWG 18 | PA322 | 4 | 1062-16-0122 | | PA329 | 4 | 1062-16-0122 | | 13.33 | 027 | |
| 028 | E-STOP OUT | BLUE | AWG 18 | XJ02A | 2 | BLUNT CUT | | PA315 | 6 | 1062-16-0122 | | 58.00 | 028 | |
| 029 | E-STOP IN | BLUE | AWG 18 | XJ02A | 1 | BLUNT CUT | | PA315 | 7 | 1062-16-0122 | | 58.00 | 029 | |
| 030 | PWR PANEL | RED | AWG 18 | PA43 | 1 | 1062-16-0122 | | PA316 | 12 | 1062-16-0122 | | 34.00 | 030 | |
| 031 | PWR PANEL | RED | AWG 18 | PA316 | 10 | 1062-16-0122 | | PA42 | 1 | 1062-16-0122 | | 34.00 | 031 | |
| 032 | PWR PANEL | RED | AWG 18 | PA316 | 8 | 1062-16-0122 | | PA41 | 1 | 1062-16-0122 | | 34.00 | 032 | |
| 033 | GND | BLACK | AWG 18 | PA316 | 1 | 1062-16-0122 | | PA43 | 2 | 1062-16-0122 | | 34.00 | 033 | |
| 034 | GND | BLACK | AWG 18 | PA316 | 3 | 1062-16-0122 | | PA42 | 2 | 1062-16-0122 | | 34.00 | 034 | |
| 035 | GND | BLACK | AWG 18 | PA316 | 5 | 1062-16-0122 | | PA41 | 2 | 1062-16-0122 | | 34.00 | 035 | |
| 036 | CAN (0) LO | YELLOW | AWG 18 | PA316 | 2 | 1062-16-0644 | | PA43 | 3 | 1062-16-0644 | | 34.00 | 036 | |
| 037 | CAN (0) HI | YELLOW | AWG 18 | PA316 | 9 | 1062-16-0644 | | PA42 | 3 | 1062-16-0644 | | 34.00 | 037 | |
| 038 | CAN (0) HI | YELLOW | AWG 18 | PA316 | 7 | 1062-16-0644 | | PA41 | 3 | 1062-16-0644 | | 34.00 | 038 | |
| 039 | CAN (0) HI | GREEN | AWG 18 | PA316 | 11 | 1062-16-0644 | | PA43 | 4 | 1062-16-0644 | | 34.00 | 039 | |
| 040 | CAN (0) LO | GREEN | AWG 18 | PA316 | 4 | 1062-16-0644 | | PA42 | 4 | 1062-16-0644 | | 34.00 | 040 | |
| 041 | CAN (0) LO | GREEN | AWG 18 | PA316 | 6 | 1062-16-0644 | | PA41 | 4 | 1062-16-0644 | | 34.00 | 041 | |
| 042 | CAN (0) HI | YELLOW | AWG 18 | PA314 | 9 | 1062-16-0644 | | PA36 | 3 | 1062-16-0644 | | 20.00 | 042 | |
| 001A | DISPLAY PWR | ORANGE | AWG 18 | PA314 | 8 | 1062-16-0122 | | PA318 | 1 | 1062-16-0122 | | 16.00 | 001A | |
| 002A | GND | BLACK | AWG 18 | SP233 | R | | | PA314 | 5 | 1062-16-0122 | | 21.00 | 002A | |
| 002B | GND | BLACK | AWG 18 | SP233 | R | | | XA57 | 1 | | | 12.00 | 002B | |
| 002C | GND | BLACK | AWG 18 | SP233 | L | | | PA318 | 2 | 1062-16-0122 | | 19.00 | 002C | |
| 007A | MAIN CAN HI | YELLOW | AWG 18 | SP221 | L | | | PA313 | 11 | 1062-16-0644 | | 15.00 | 007A | |
| 007B | MAIN CAN HI | YELLOW | AWG 18 | SP221 | L | | | PA313 | 10 | 1062-16-0644 | | 15.00 | 007B | |
| 007C | MAIN CAN HI | YELLOW | AWG 18 | SP221 | R | | | PA317 | 1 | 1062-16-0644 | | 33.00 | 007C | |
| 008A | MAIN CAN LO | GREEN | AWG 18 | SP222 | L | | | PA313 | 2 | 1062-16-0644 | | 13.00 | 008A | |
| 008B | MAIN CAN LO | GREEN | AWG 18 | SP222 | L | | | PA313 | 3 | 1062-16-0644 | | 13.00 | 008B | |
| 008C | MAIN CAN LO | GREEN | AWG 18 | SP222 | R | | | PA317 | 2 | 1062-16-0644 | | 35.00 | 008C | |

| Pin | Wire | Signal | Target |
|-----|------|-------------|---------|
| 1 | 001A | DISPLAY PWR | PA314:8 |
| 2 | 002C | GND | SP233 |
| 3 | | | |
| 4 | | | |
| 5 | | | |
| 6 | | | |
| 7 | | | |
| 8 | 005 | BAALARM SIG | XA56:1 |
| 9 | | | |
| 10 | | | |
| 11 | 003 | CAN (1) HI | PA314:7 |
| 12 | 004 | CAN (1) LO | PA314:6 |



APPLICABLE STANDARDS / SPECIFICATIONS
HARNNESS SPECIFICATIO DRAWING 606000

DO NOT SCALE DRAWING
DIMENSIONS ARE IN INCHES
UNLESS OTHERWISE SPECIFIED.



EMERGENCY ONE INC
OCALA FL USA
HARN PLATFORM CONSOLE

DATE OF RELEASE
DRAWN BY: T CUPPY DATE: 03/13/2019
CHECKER: D SMITH
DESIGN APPROVAL: D SMITH
SIMILAR TO:

SIZE: C
SCALE: NONE
SHEET 1 OF 2

| REV | DESCRIPTION | DATE | DRAWN BY |
|-----|-----------------|------------|----------|
| A | INITIAL RELEASE | 03/13/2019 | T CUPPY |

| PA300 CRADLE ALIGN LT | | | |
|-----------------------|------|-----------------|---------|
| Pin | Wire | Signal | Target |
| 1 | 023 | CRADLE ALIGN LT | PA315.1 |
| 2 | 024 | GND | PA315.2 |

| PA301 RUNG ALIGN LT | | | |
|---------------------|------|---------------|---------|
| Pin | Wire | Signal | Target |
| 1 | 011 | RUNG ALIGN LT | PA315.3 |
| 2 | 012 | GND | PA315.4 |

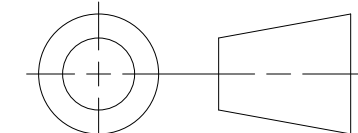
| XJ02AE-STOP SW | | | |
|--------------------|------|------------|---------|
| Pin | Wire | Signal | Target |
| NONE NO CONNECTION | | | |
| 1 | 029 | E-STOP IN | PA315.7 |
| 2 | 028 | E-STOP OUT | PA315.8 |

| PA36 SYSTEM KEYPAD | | | |
|--------------------|------|------------|----------|
| Pin | Wire | Signal | Target |
| 1 | 017 | PWR PANEL | PA314.10 |
| 2 | 018 | GND | PA314.3 |
| 3 | 042 | CAN (0) HI | PA314.9 |
| 4 | 020 | CAN (0) LO | PA314.4 |


| PA314 CNSL TAG CAN A | | | |
|----------------------|------|-------------|----------|
| Pin | Wire | Signal | Target |
| 1 | 014 | GND | PA40.2 |
| 2 | 016 | CAN (0) LO | PA40.4 |
| 3 | 018 | GND | PA36.2 |
| 4 | 020 | CAN (0) LO | PA36.4 |
| 5 | 002A | GND | SP233 |
| 6 | 004 | CAN (1) LO | PA318.12 |
| 7 | 003 | CAN (1) HI | PA318.11 |
| 8 | 001A | DISPLAY PWR | PA318.1 |
| 9 | 042 | CAN (0) HI | PA36.3 |
| 10 | 017 | PWR PANEL | PA36.1 |
| 11 | 015 | CAN (0) HI | PA40.3 |
| 12 | 013 | PWR PANEL | PA40.1 |

| PA323 CNSL TAG I/O | | | |
|--------------------|------|--------------|--------|
| Pin | Wire | Signal | Target |
| 1 | | | |
| 2 | | | |
| 3 | | | |
| 4 | | | |
| 5 | 022 | GND | XA33.1 |
| 6 | | | |
| 7 | | | |
| 8 | | | |
| 9 | | | |
| 10 | | | |
| 11 | | | |
| 12 | 021 | BODY PROTECT | XA34.1 |

DO NOT SCALE DRAWING
DIMENSIONS ARE IN INCHES
UNLESS OTHERWISE SPECIFIED.



THIRD ANGLE PROJECTION



EMERGENCY ONE INC
OCAJA FL USA

HARN PLATFORM CONSOLE

DATE OF RELEASE
DRAWN BY: T CUPPY DATE: 03/13/2019
CHECKER: D SMITH
DESIGN APPROVAL: D SMITH
SIMILAR TO:

APPLICABLE STANDARDS / SPECIFICATIONS
HARNNESS SPECIFICATIO DRAWING 606000

SIZE: 1095406
SCALE: NONE

SHEET 2 OF 2

APPLICABLE STANDARDS / SPECIFICATIONS
HARNNESS SPECIFICATIO DRAWING 606000